

North West Dioceses Catholic Leadership Programme 2017

Challenges facing Catholic schools

in the 21st Century

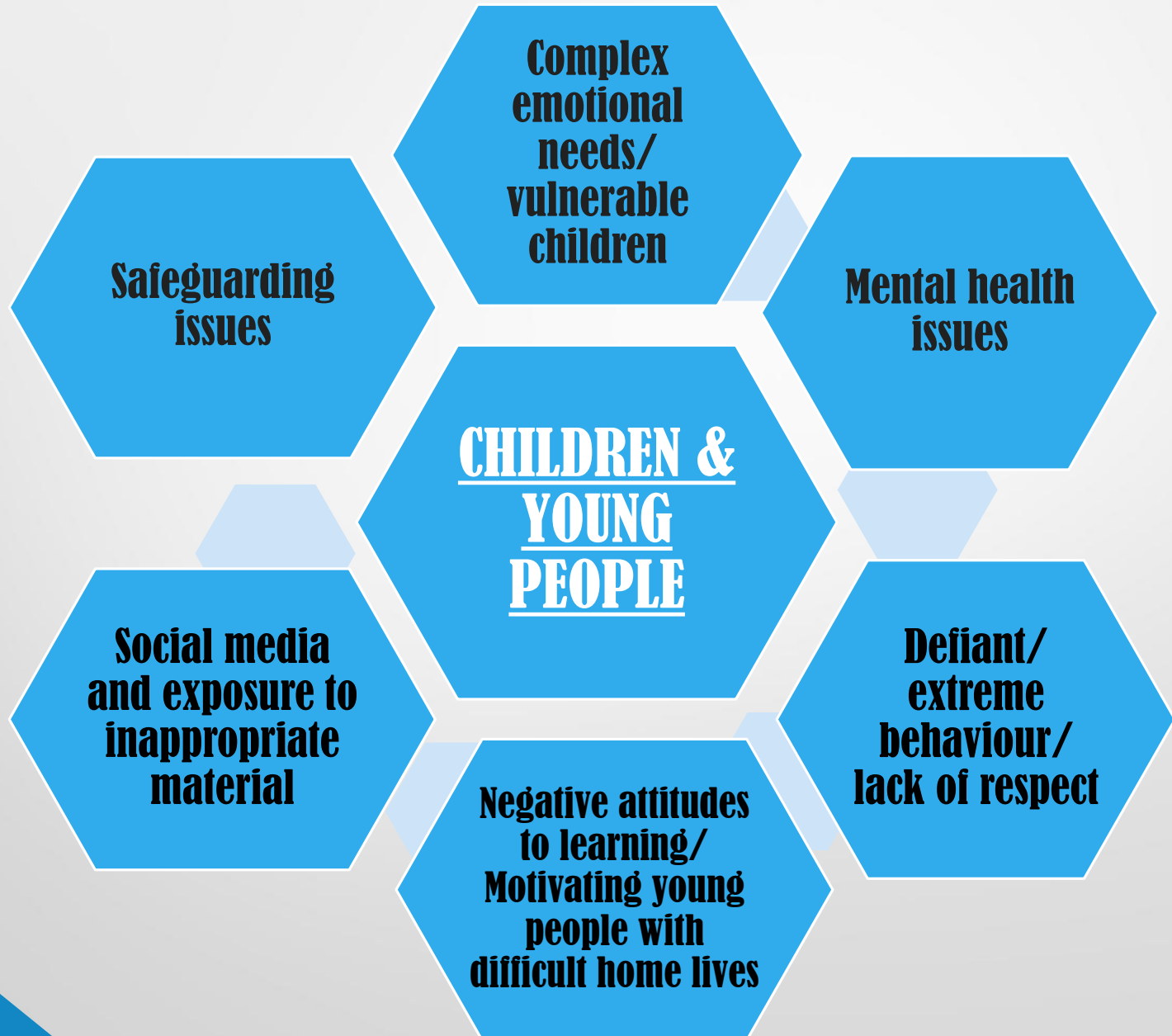
Tuesday 21st March 2017

What are the current challenges related to the context of your school and/or the realities of your own day-to-day working life in a Catholic school?

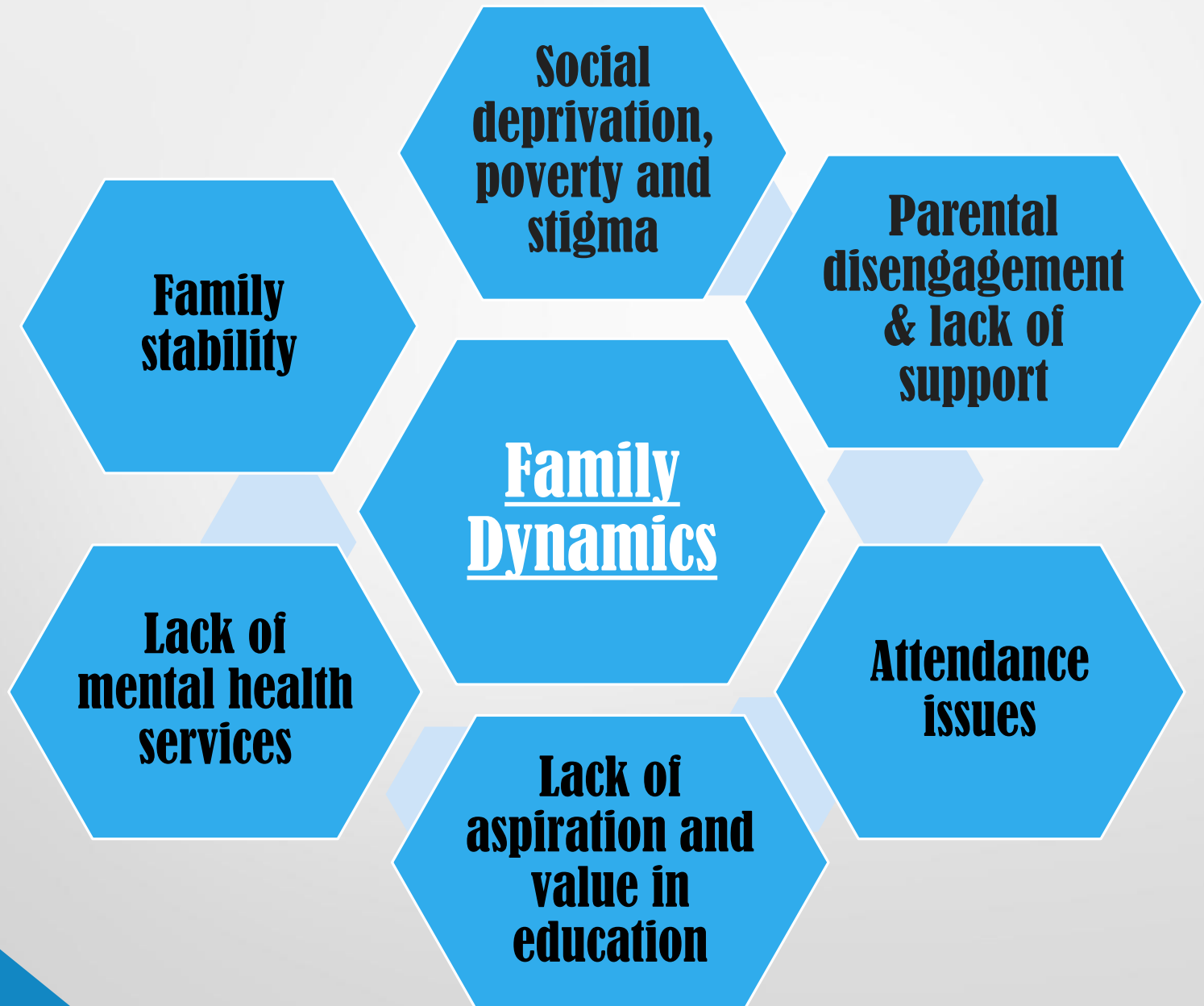
Table discussion: Feedback



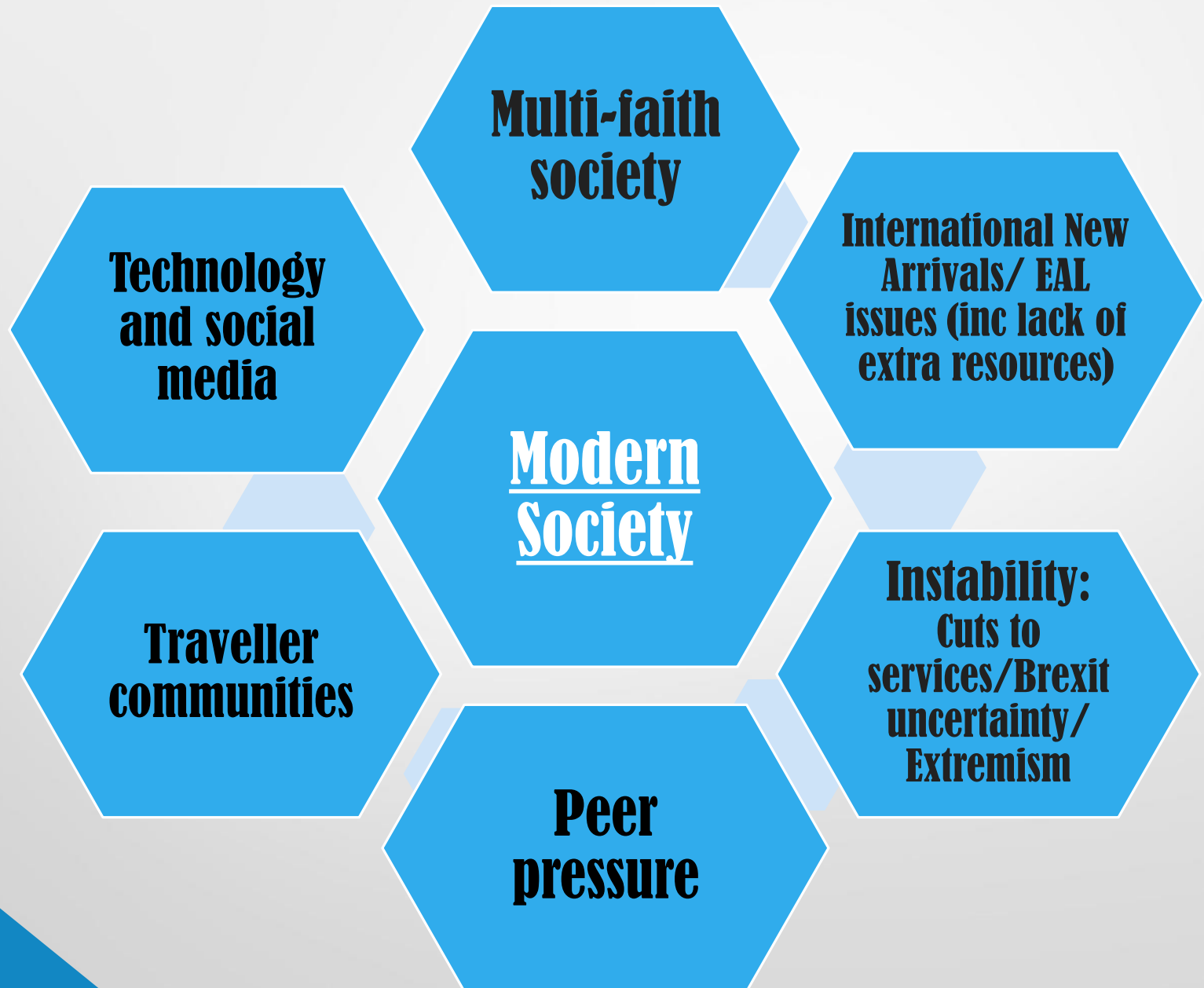
Current Challenges



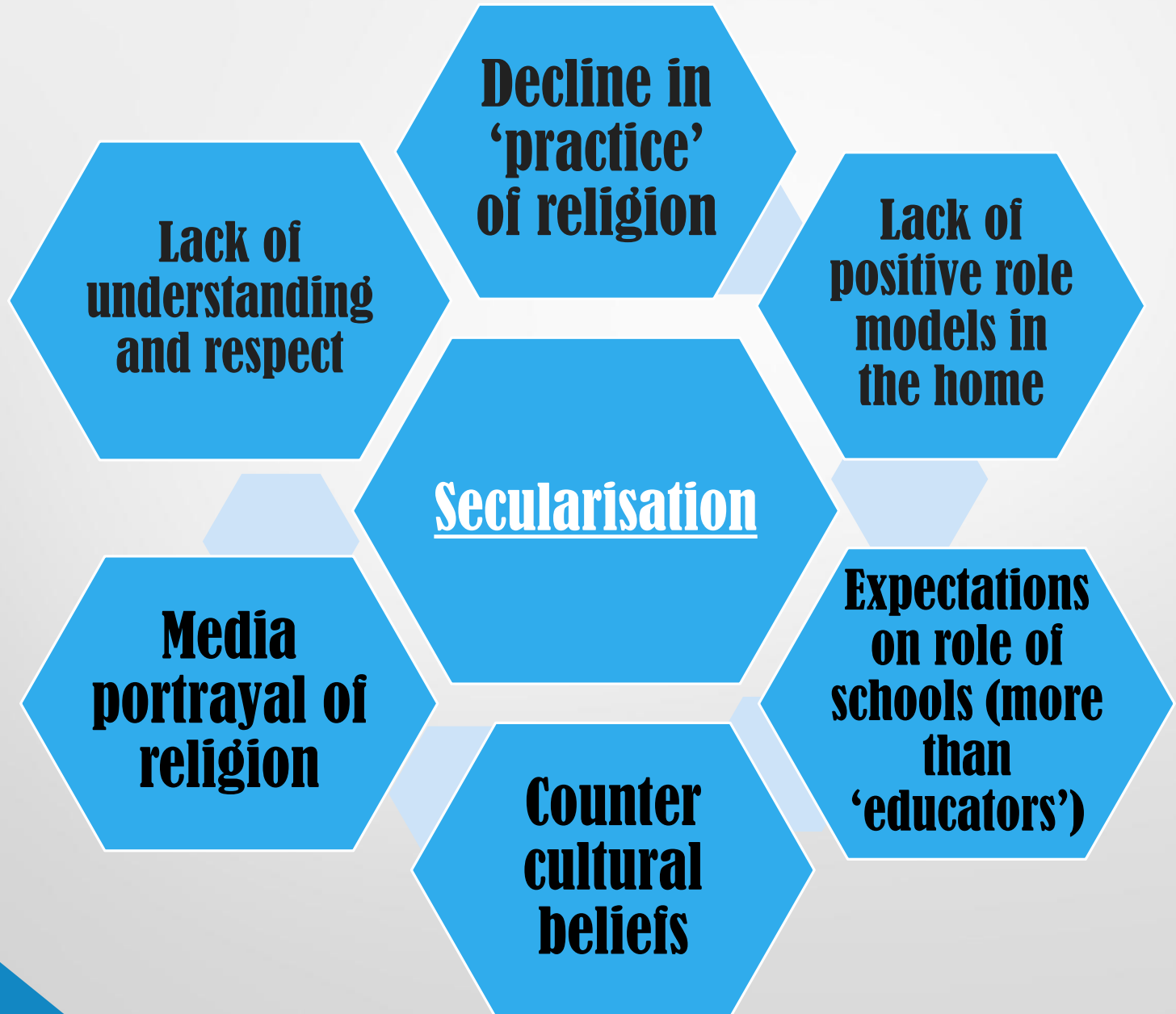
Current Challenges



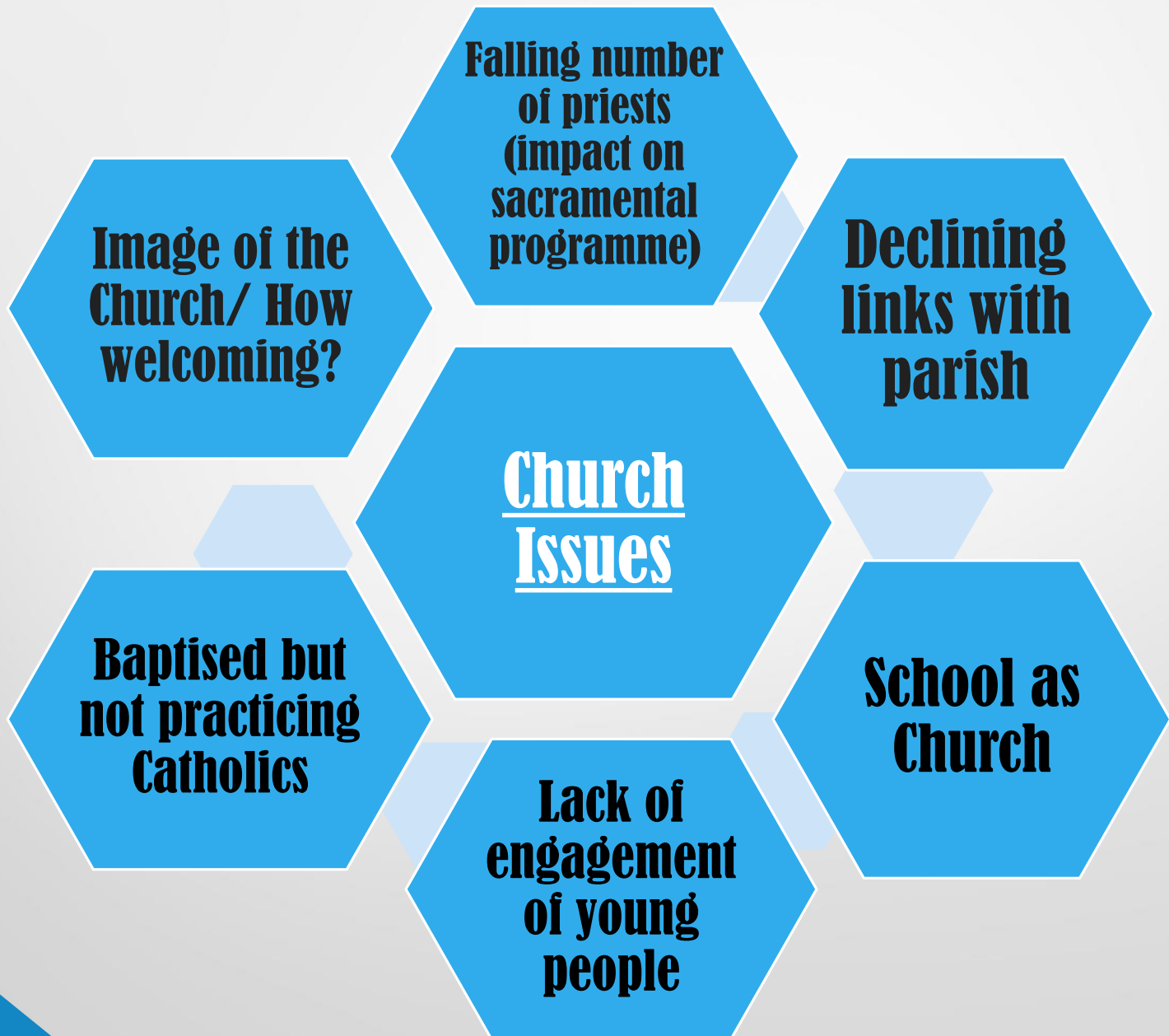
Current Challenges



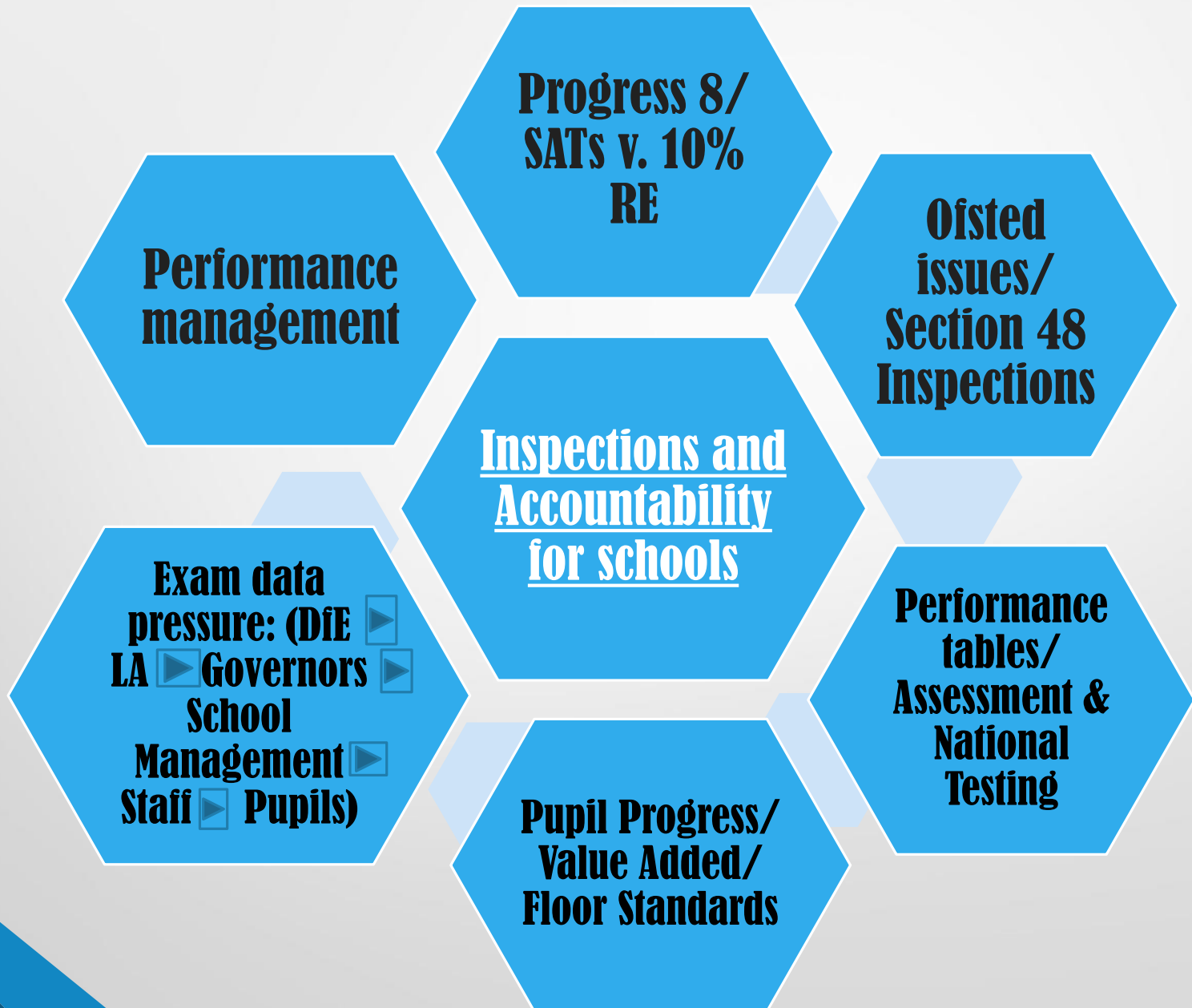
Current Challenges



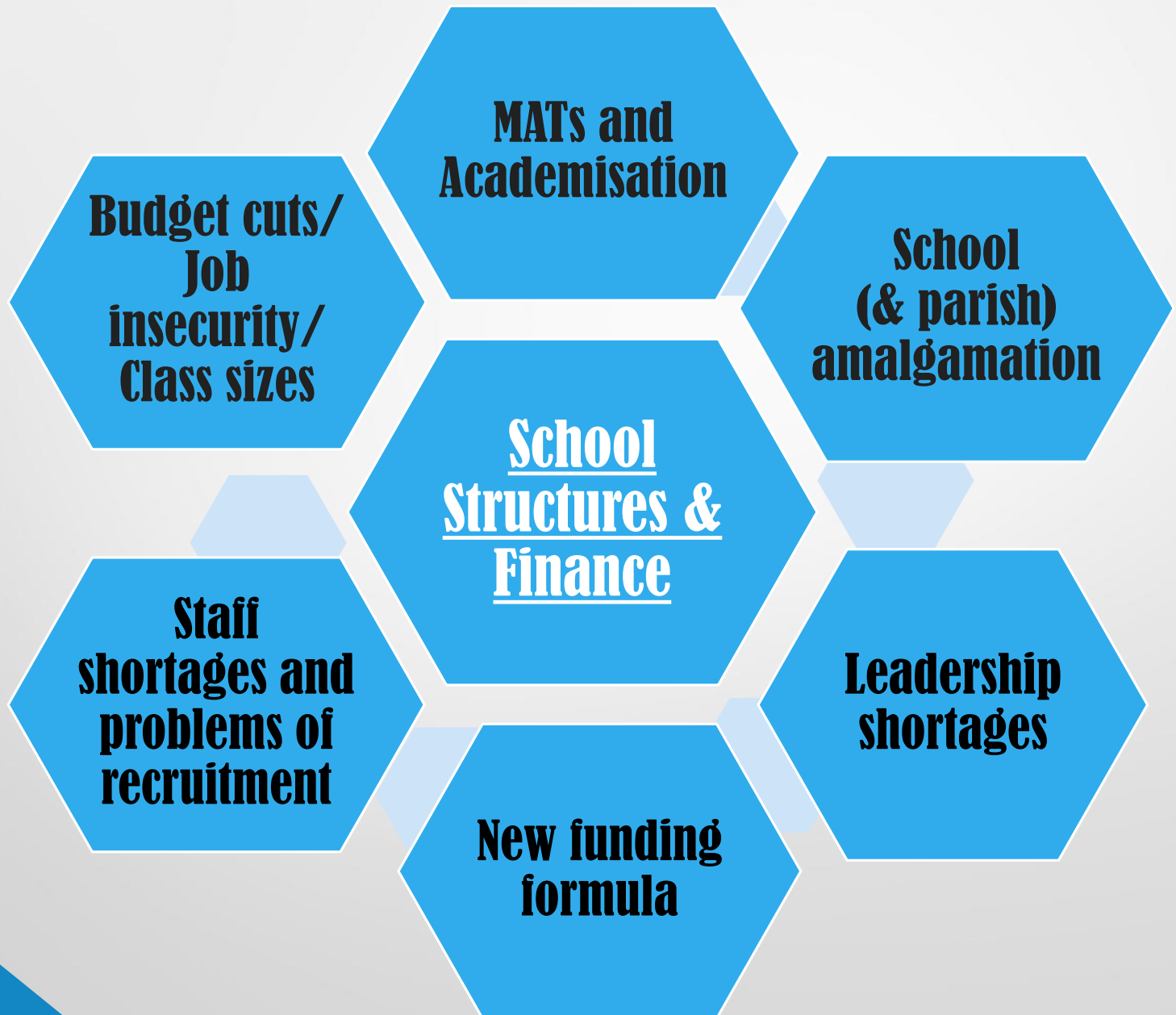
Current Challenges



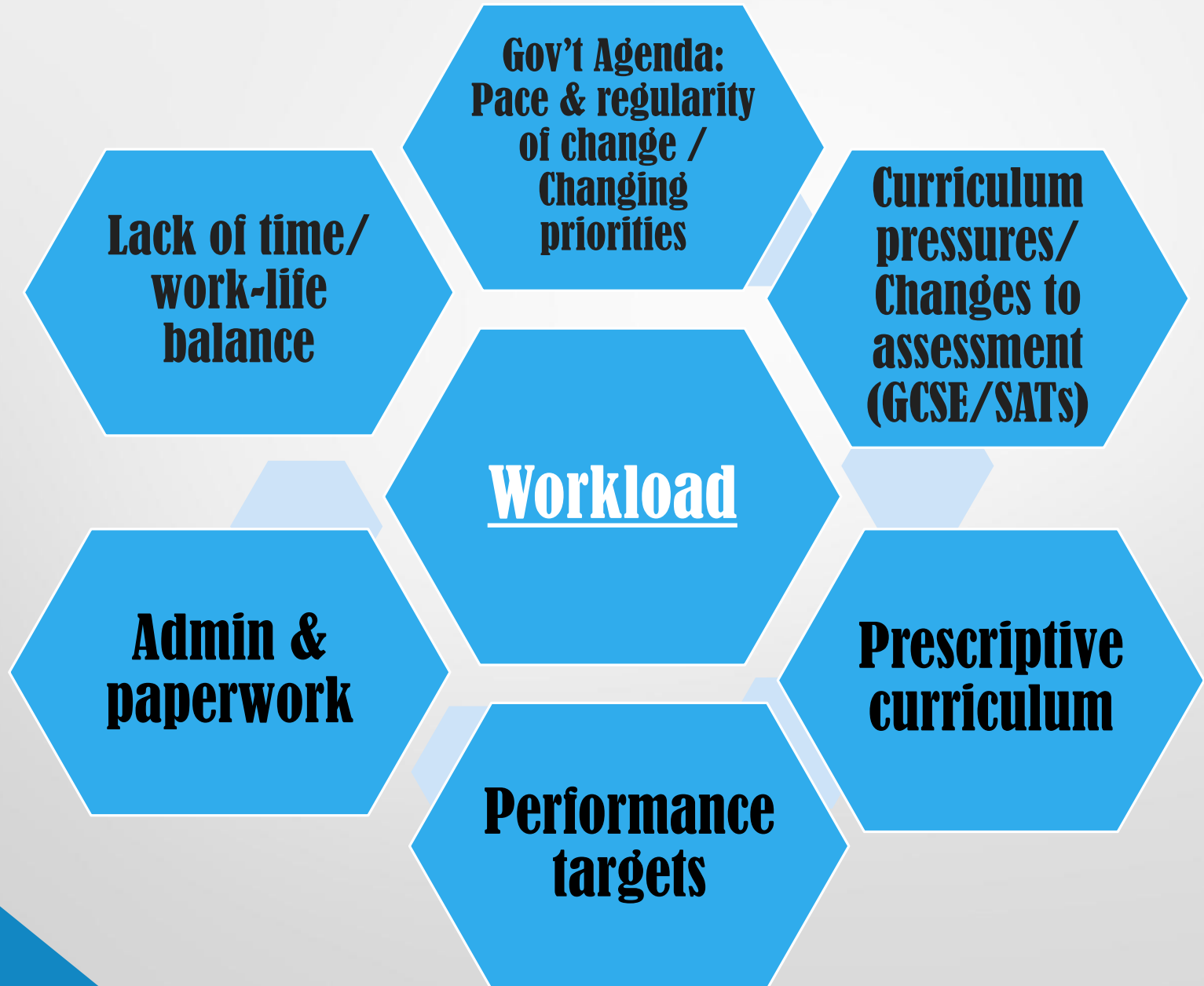
Current Challenges

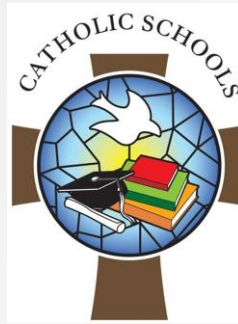


Current Challenges



Current Challenges





**If you had complete autonomy in
and control over what goes on in your
school.....
WHAT WOULD THIS LOOK LIKE?**



